

job name:   
 type:

## flt.maxx™ ceiling spec sheet 90CRI

### material

#### trim ring

precision CNC spun .063" aluminum. rolled bottom edge for added strength.

#### diffuser

.177" non-glare light matte high transmission acrylic drop lens held in place with allen key set screws recessed into trim ring.

### optics

#### reflector

.050" aluminum array platform painted high reflectance (>92%) matte white powder coat.

### LED

custom LED board in 3000K, 3500K, or 4000K (90+ cri standard)9. under normal operating conditions, the LEDs employed are rated for >50,000hrs L70 (6.8K) per IES TM-21 from LM-80 test data. white power cord is standard with other color options listed below.

### driver

integral, programmable, UL class P, class 2, universal input (120-277v), constant current, 0-10v dimming, 1% minimum dimming level, PF >.9, THD <20%, protections include open and short circuit, overload and over temperature.

### mounting

utilizes a custom mounting ring assembly designed to draw trim ring tight to the ceiling. consult factory for installation instructions.

### emergency

recommend use of inverter (by other).



## catalog number

|  |  |  |  |  |
|--|--|--|--|--|
|  |  |  |  |  |
|--|--|--|--|--|

### size

**C7826**  
(2ft)  
26" dia X 4.75"ht

**C7838**  
(3ft)  
38" dia X 6.75"ht

### CCT

3000K  
3500K  
4000K

### lumens

**FX** 2600 lm  
**LO** 5100 lm  
**HI** 8300 lm  
**HX** 9700  
**CL** xxxx lm  
custom lumens  
consult factory

**FX** 5150 lm  
**LO** 10200 lm  
**HI** 16600 lm  
**HX** 19400 lm  
**CL** xxxx lm  
custom lumens  
consult factory

### painted finish

**AP** anodized paint  
**BS** brass  
**BU** blue  
**BZ** bronze  
**CP** champagne  
**FB** flat black  
**GM** gun metal  
**MB** military blue  
**MW** matte white  
**OR** orange  
**RD** red  
**SB** satin black  
**SS** satin silver  
**TG** textured gray  
**YO** yellow

### premium finish

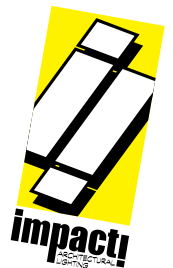
**RAL** specify RAL#

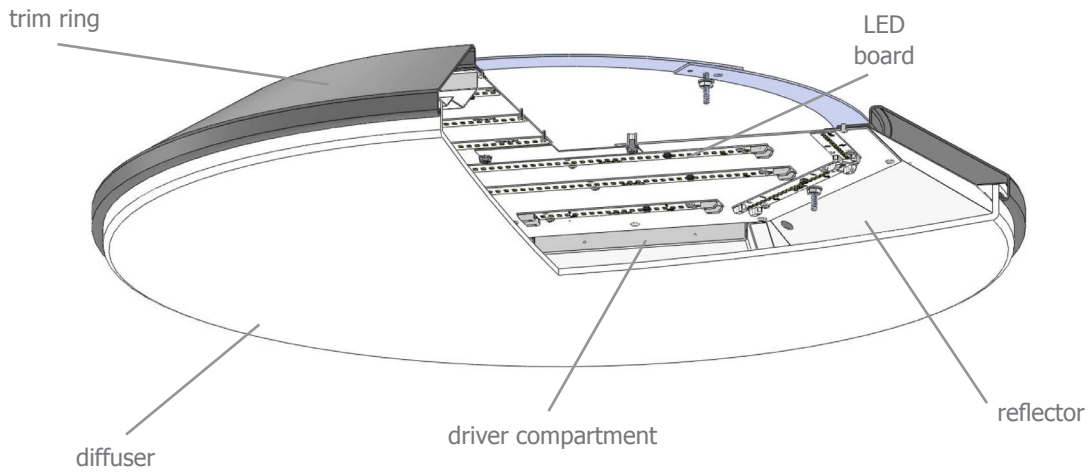
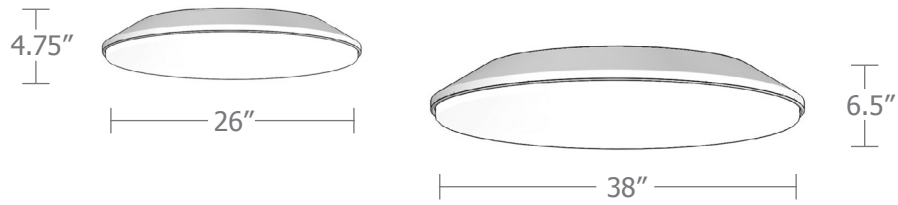
### options

**WREM** wired for remote EM battery pack  
(by other)  
(see note above)

**ELD** EldoLED\*

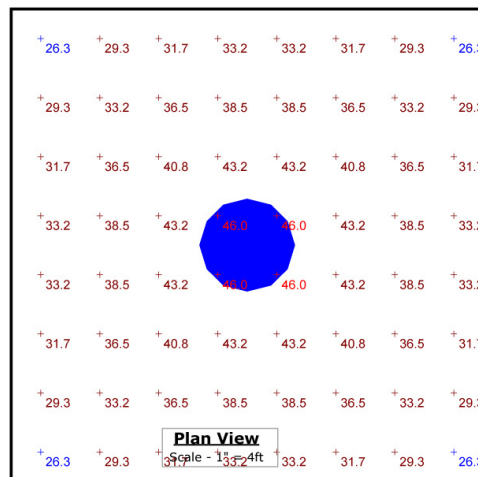
**LUT** Lutron\*  
\*consult factory





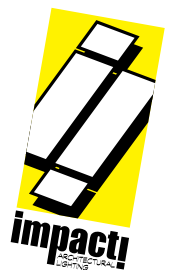
### Typical Lighting Layout

- 14' x 14' x 20'H space
- 80/50/20 reflectances
- bottom of fixture at 16' aff
- FC readings at 2.5' aff
- layout conducted using 38" dia. unit with HI lumen 90 CRI package providing 16600 delivered lumens



#### Statistics

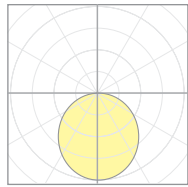
| Description     | Symbol | Avg     | Max     | Min     | Max/Min | Avg/Min |
|-----------------|--------|---------|---------|---------|---------|---------|
| ft.maxx ceiling | +      | 35.7 fc | 46.0 fc | 26.3 fc | 1.7:1   | 1.4:1   |



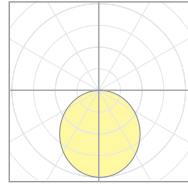
## Calculation Table

The application of a Light Loss Factor is required to:

- match the lumen output for the power module specified
- incorporate the increased lumen output due to LED/Driver upgrades



18682  
C7826



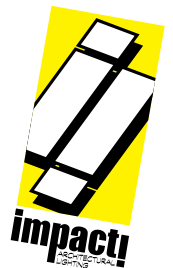
11208  
C7838

| Cat No          | Delivered* Lumens | Watts 120V / 277V | IES File #   | LLF to be applied |
|-----------------|-------------------|-------------------|--------------|-------------------|
| <b>C7826 FX</b> | 2600              | 30                | <b>18681</b> | .61               |
| <b>C7826 LO</b> | 5100              | 59                | <b>18681</b> | 1.20              |
| <b>C7826 HI</b> | 8300              | 96                | <b>18682</b> | 1.21              |
| <b>C7826 HX</b> | 9700              | 112               | <b>18682</b> | 1.42              |
| <b>C7838 FX</b> | 5150              | 59                | <b>18686</b> | .77               |
| <b>C7838 LO</b> | 10200             | 118               | <b>18686</b> | 1.53              |
| <b>C7838 HI</b> | 16600             | 192               | <b>11208</b> | 1.20              |
| <b>C7838 HX</b> | 19400             | 224               | <b>11208</b> | 1.40              |

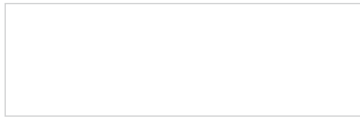
\*delivered lumens based on 4000K, 90+ cri

The application of a Light Loss Factor is required to:

- match the lumen output for the power module specified
- incorporate the increased lumen output due to LED/Driver upgrades



## Powder Coat Paint Finishes



**MW** matte white



**AP** anodized paint



**SS** satin silver



**TG** textured gray



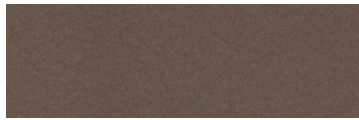
**FB** flat black



**SB** satin black



**CP** champagne



**BZ** bronze



**GM** gun metal



**OR** orange 2011



**BU** blue 5017



**BS** brass



**RD** red 3020



**YO** yellow 1018



**MB** military blue

For accurate color verification, actual finish samples are available upon request.

## Premium Finishes\*



**RAL#**

\*Available on select series. Consult product submittal for availability.

